

# Face Fixing

SOLIDAL® T3® (3mm)

SOLIDAL® T4® (4mm)

**Wall cladding & Soffits**

Face Fixing allows SOLIDAL® T3® (3mm) and T4® (4mm) Solid Aluminium to be installed in a few easy steps using rivets or screws. The use of proper Thermal Insulation Panels and Weather Membrane is required.

## COLOURS and FINISHES

- Continuous coated PPG PVDF
- Powdercoated
- Anodised (10, 15, 25 um)

## FABRICATION OPTIONS

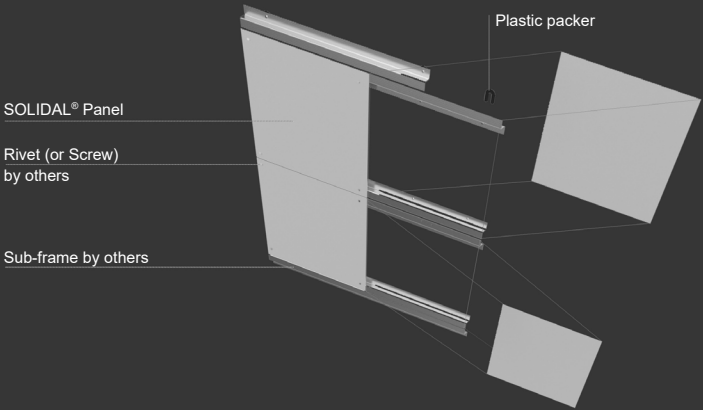
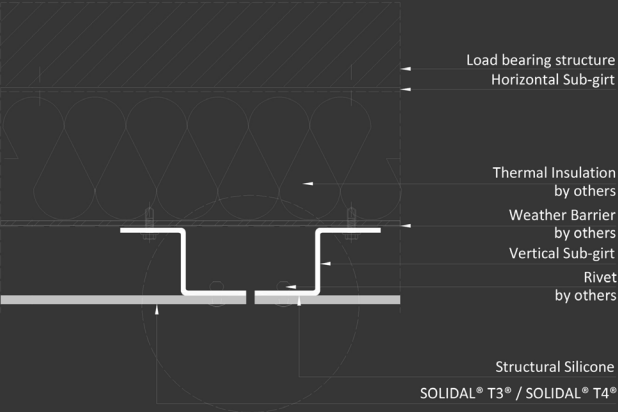
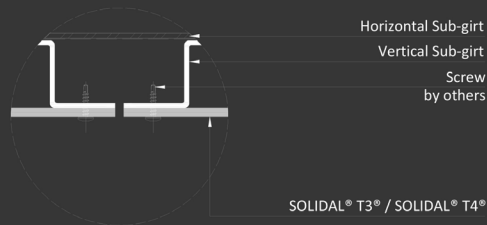
- Curved & Folded
- Dimple & Pressed
- Laser cut & Perforated

To determine most suitable SOLIDAL® Material, Finish and Application System for your project, please contact your supplier.



[www.solidalmetal.com](http://www.solidalmetal.com)

SOLIDAL® Panels can be delivered as standard size or cut to measure.  
Installation is possible with rivets or using appropriate size screws.



Contact SOLIDAL® or your rivet manufacturer for information on color matching and for general guidelines and recommendations.

Technical Specifications

	SOLIDAL® T3®	SOLIDAL® T4®
Panel Thickness (mm)	3mm	4mm
Available width (mm)	1240mm, 1500mm, 2000mm	
Length (mm)	up to 7000mm	