



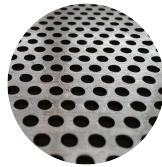
SOLIDAL[®]

Wall Cladding & Soffits

APPLICATION SYSTEMS

SOLIDAL® STANDARD CASSETTE Wet-seal

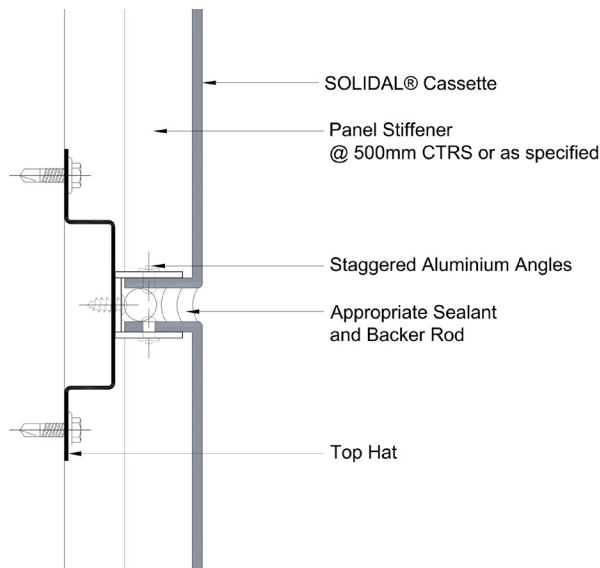
Mechanically Fixed / Wet - sealed



Perforation Available



Wet-seal INSTALLATION - Typical Joint Detail



SOLIDAL® STANDARD CASSETTE Dry Joint

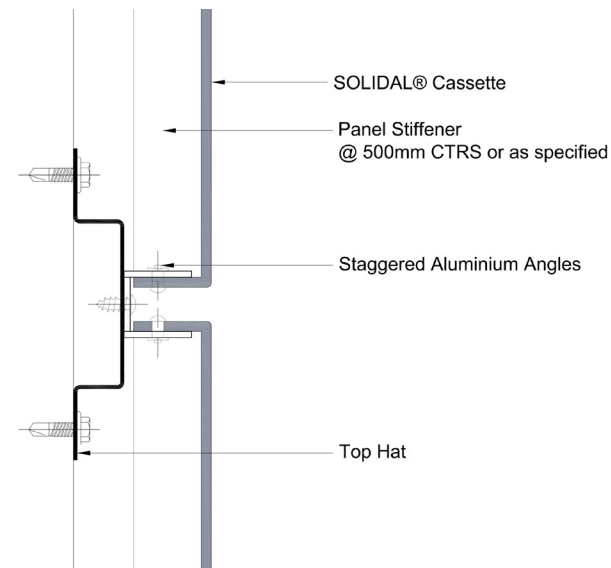
Mechanically Fixed / Dry Joint



Perforation Available



Dry Joint INSTALLATION - Typical Joint Detail

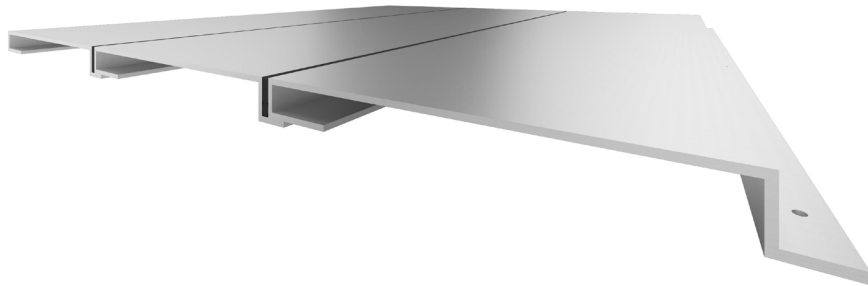


SOLIDAL® CASSETTE NARROW Wet-seal

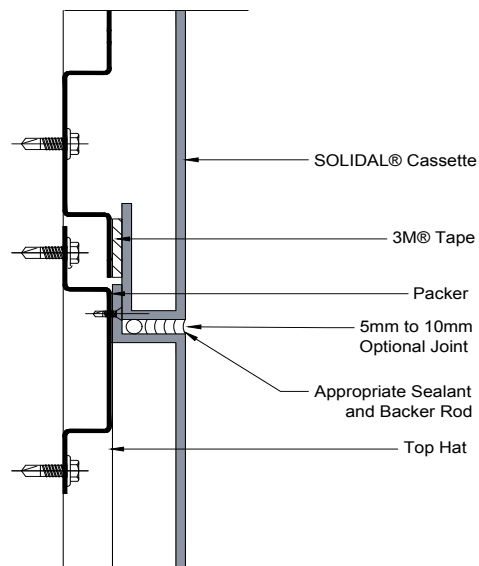
Mechanically Fixed / Wet - sealed



Perforation Available



Wet-seal INSTALLATION - Typical Joint Detail

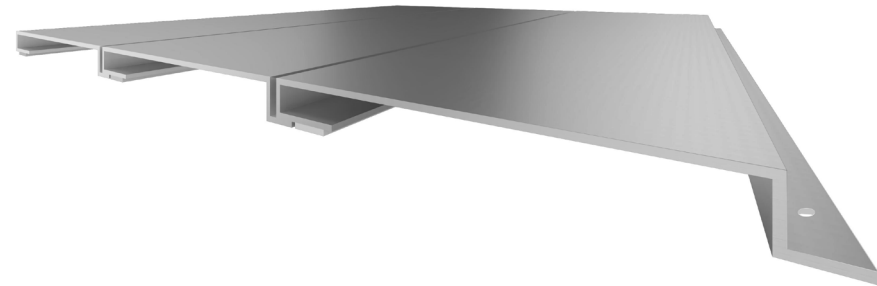


SOLIDAL® CASSETTE NARROW Dry Joint

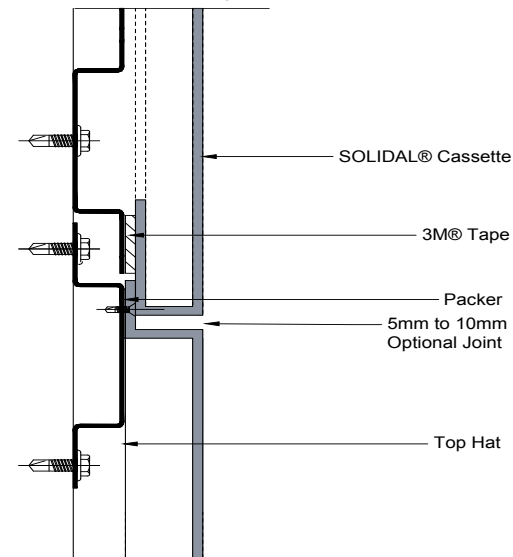
Mechanically Fixed / Dry Joint



Perforation Available



Dry Joint INSTALLATION - Typical Joint Detail

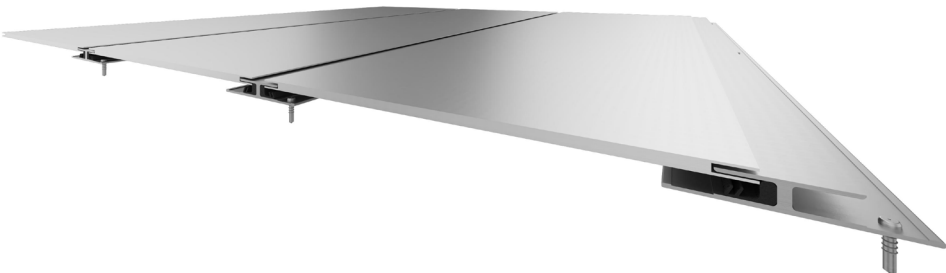


SOLIDAL® T4® Tongue & Groove

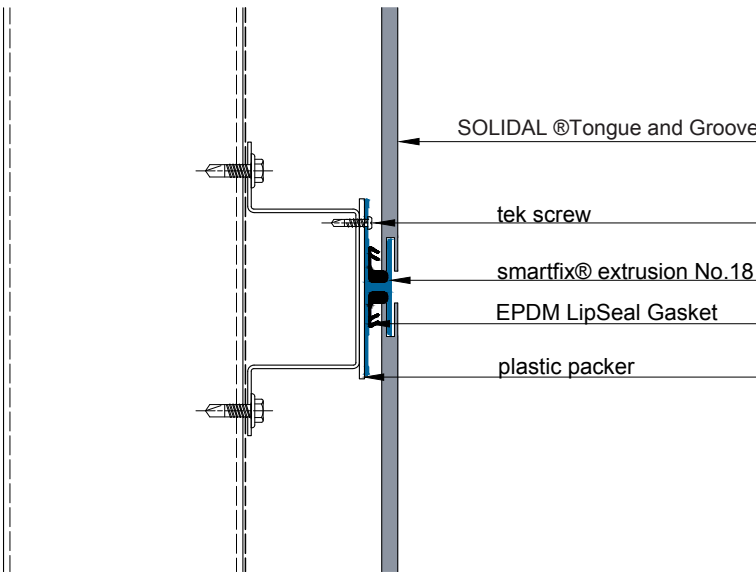
Installed using patented smartfix® extrusions / Dry Joint



Perforation Available

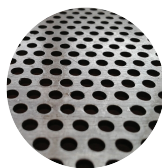


Tongue & Groove INSTALLATION - Typical Joint Detail

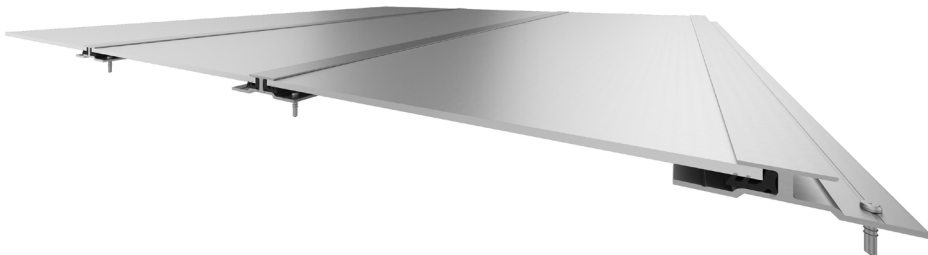


SOLIDAL® T3® Captive Extrusion

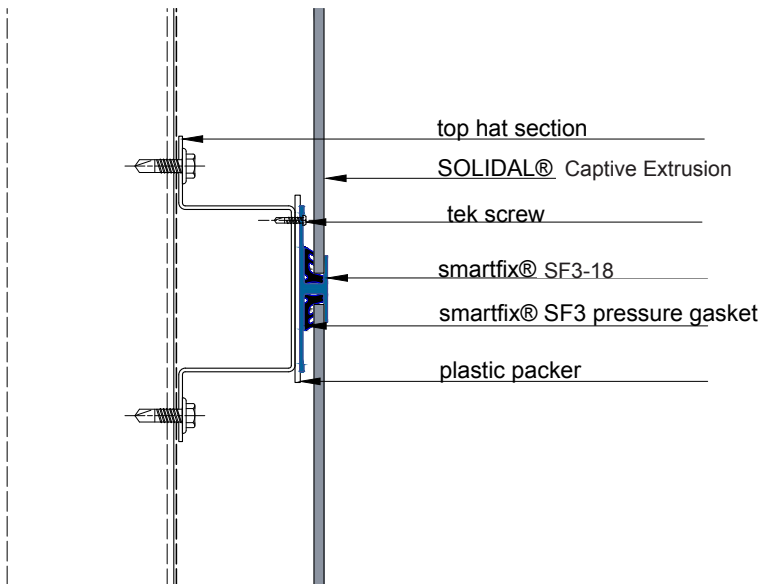
Installed using patented smartfix® extrusions / Dry Joint



Perforation Available



Captive Extrusion INSTALLATION - Typical Joint Detail

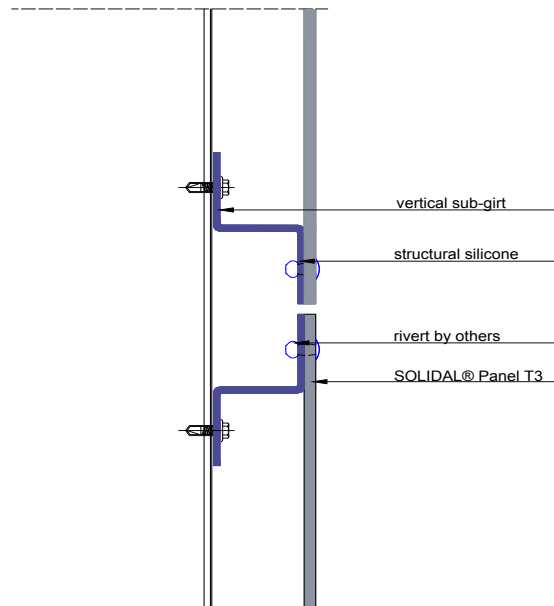


SOLIDAL® Face Fixing

Installed using Rivets or Screws / Dry Joint



Face Fixing INSTALLATION - Typical Joint Detail

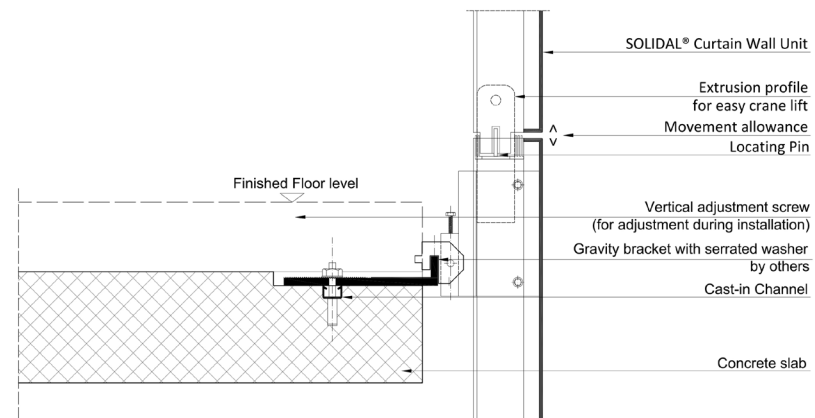


SOLIDAL® Curtain Wall

According to Project Design



Curtain Wall INSTALLATION - Joint Detail



Application Systems



SOLIDAL® T3®
SOLIDAL® T4®

SOLIDAL® PRODUCT	STANDARD CASSETTE	NARROW JOINT CASSETTE	CAPTIVE EXTRUSION	TONGUE & GROOVE	FACE FIXING
INSTALLATION	FASTENERS	FASTENERS / 3M® TAPE	SF3 CAPTIVE EXTRUSION	Smartfix Extrusion	Rivets or Screws
JOINT WIDTH	15mm (12mm MIN)	5mm	10mm	10mm	10mm
SEALING OPTION	DRY JOINT / WET-SEAL	DRY JOINT / WET-SEAL	DRY JOINT	DRY JOINT	DRY JOINT
CLADDING ZONE	25mm (up to 100mm)	25mm	12mm	12mm	3-4mm
MATERIAL & FABRICATION					
SOLIDAL® T3® (3mm Solid Aluminum)	YES	YES	YES	NO	YES
SOLIDAL® T4® (4mm Solid Aluminum)	YES	YES	NO	YES	YES
FABRICATION	20mm FOLDS WITH PRE-FITTED ALUMINIUM ANGLES	DOUBLE-FOLDED 20-20 and 20-40mm FOLDS	PRE-CUT	PRE-CUT, EDGE ROUTED	PRE-CUT, PRE-DRILLED
FOLDED EDGE	SHARP / ROUNDED	SHARP / ROUNDED	-	-	-
WIDTH (mm)	up to 1460mm	up to 1400mm	up to 1500mm	up to 1500mm	up to 1500mm
LENGTH (mm)	up to 6000mm	up to 6000mm	up to 6000mm	up to 6000mm	up to 6000mm
COLOURS & FINISHES					
CONTINUOUS COATED PVDF (ppg)	YES	YES	YES	YES	YES
POWDER COATING (AkzoNobel)	YES	YES	YES	YES	YES
ANODISED (AAF)	YES	YES	YES	YES	YES
REFLECTIVE ANODISED	YES	YES	YES	YES	YES
3D SURFACE OPTIONS					
SOLIDAL® DIMPLE® and PRESSED	YES	YES	YES	YES	YES
SOLIDAL® PERFORATED® and LASER CUT	YES	YES	YES	YES	YES

Technical Specifications



SOLIDAL® T3®
SOLIDAL® T4®

	Panel Thickness (mm)	Available width (mm)	Length (mm)
SOLIDAL® T3®	3mm	1240mm, 1500mm, 2000mm	up to 7000mm
SOLIDAL® T4®	4mm	1240mm, 1500mm, 2000mm	up to 7000mm

Physical Properties

MECHANICAL PROPERTIES	* 3000 Series SOLIDAL®	** 5000 Series SOLIDAL®
Brinell Hardness	45	67
Elastic Modulus	70GPa	68GPa 9.9 x 106 psi
Elongation at Break	6.0%	8.0%
Fatigue Strength	68 MPa	110 MPa 15 x 103 psi
Poisson's Ratio	0.33	0.33
Shear Modulus	26 GPa	26 GPa 3.7 x 106 psi
Shear Strength	93 MPa	150 MPa 22 x 103 psi
Tensile Strength: Ultimate	160 MPa	250 MPa 37 x 103 psi
Tensile Strength: Yield (Proof)	125 MPa	190 MPa 28 x 103 psi
THERMAL PROPERTIES		
Melting Onset (Solidus)	640 °C 1120 °F	610 °C 1120 °F
Specific Heat Capacity	900 J/kg-K 0.22 BTU/lb-°F	900 J/kg-K 0.22 BTU/lb-°F
Thermal Conductivity	180 W/m-K 100 BTU/h-ft-°F	140 W/m-K 80 BTU/h-ft-°F
Thermal Expansion	23µm/m-K	24µm/m-K
ELECTRICAL PROPERTIES		
Electrical Conductivity: Equal Volume	44% IACS	35% IACS
Electrical Conductivity: Equal Weight (Specific)	140%	120%

* 5000 Series SOLIDAL® is ideal for Anodise application

(Please consult a SOLIDAL® representative for further information on Anodised grade Aluminium)

Visit www.solidalmetal.com or contact us for more information

SOLIDAL®

HEAD OFFICE

9A Davis Road
Wetherill Park, Sydney
NSW 2164, Australia

www.solidalmetal.com
E: info@solidalmetal.com
T: 1 300 252 325

Po Box 1393
Redfern 2016
NSW, Australia

DISCLAIMER: SOLIDAL® has taken due care to prepare the enclosed literature to assist the end user. SOLIDAL® is not liable for any errors and accepts no liability for information which may be misleading or misinterpreted. Images used are an illustration, only.

Color Disclaimer SOLIDAL® have made every effort to make the colours and finishes on screen, are as close as possible to the colours and finishes of the products you'll use. However, we cannot guarantee an exact match in colours and finishes and the images and information on this website should not be relied on as such. The representation of colours, gloss levels, metallic pigment effects and textures are limited by technology and may vary due to screen and printer settings.

Copyright© SOLIDAL® All rights reserved.

